

**Comune di Santa Marinella
Castello di Santa Severa**

Descrizione della tavola:

AREA museale
"Castello e Torre Saracena"

Piano interrato

Scala:

Scala 1 : 100

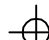
Data:


ottobre 2017

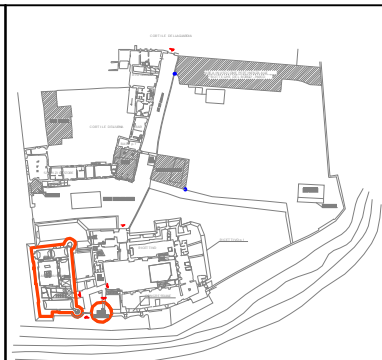
Tavola:

1

Legenda

 - 0.00 quota pavimento

 cono foto



RILIEVO PIANO INTERRATO



Foto 1



Foto 2



Foto 3



Foto 4

**Comune di Santa Marinella
Castello di Santa Severa**

Descrizione della tavola:

AREA museale
"Castello e Torre Saracena"

Piano terra

Scala:

Scala 1 : 100


Data:

ottobre 2017

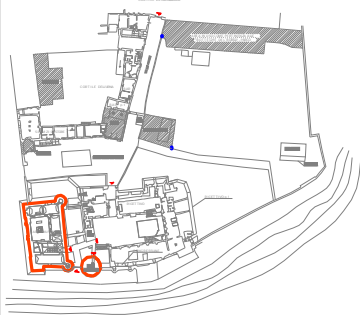
Tavola:

2

Legenda

 + 0.00 quota pavimento

 cono foto



RILIEVO PIANO TERRA



Foto 1



Foto 2



Foto 3



Foto 4



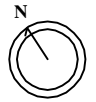
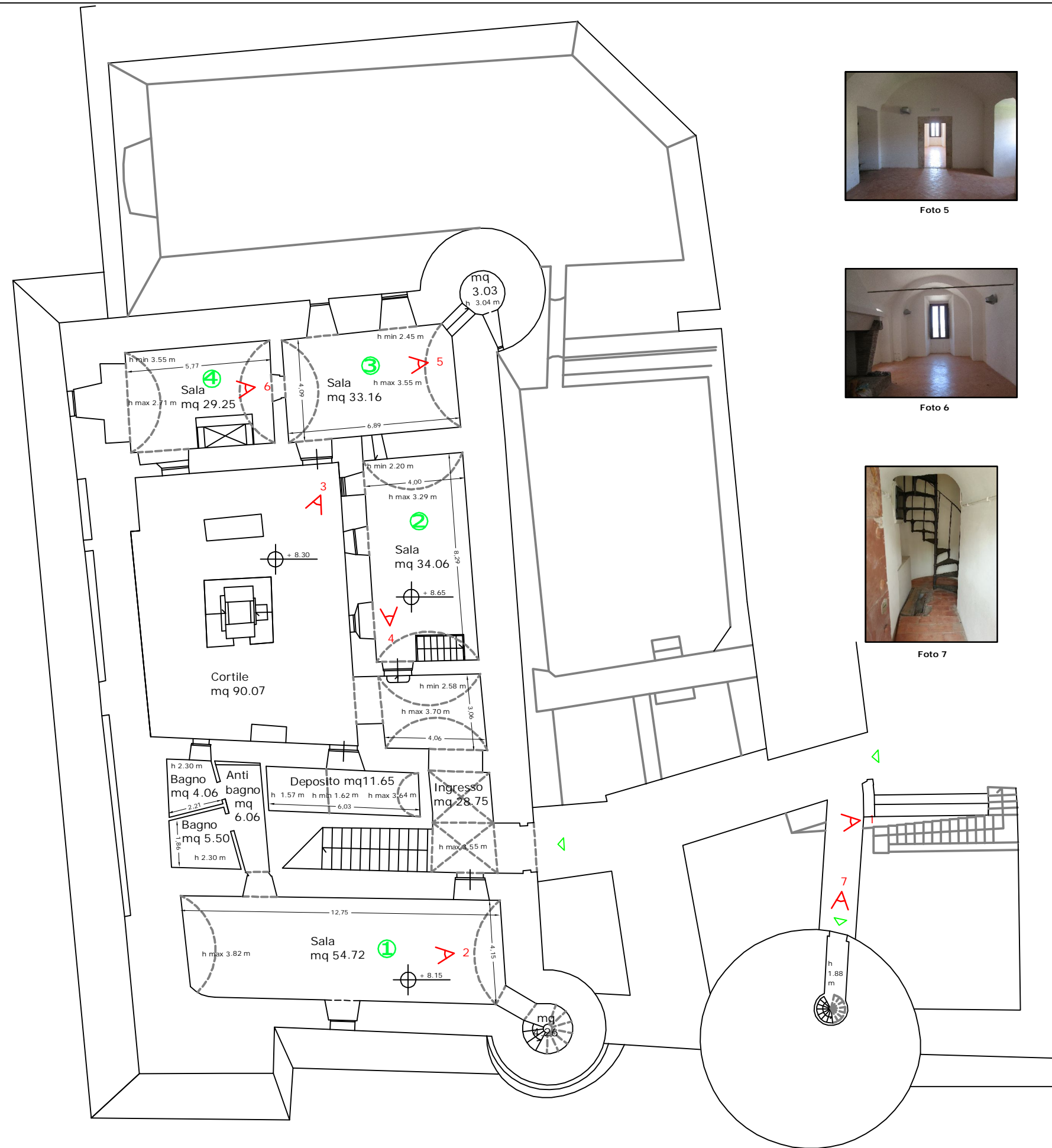
Foto 5



Foto 6



Foto 7





Comune di Santa Marinella
Castello di Santa Severa

Descrizione della tavola:

AREA museale
"Castello e Torre Saracena"

Piano primo

Scala:

Scala 1 : 100

Data:

ottobre 2017

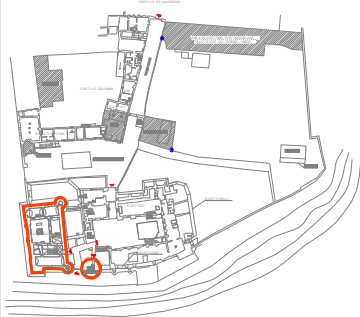
Tavola:

3

Legenda

⊕ + 0.00 quota
pavimento

∠ cono foto



RILIEVO PIANO PRIMO



Foto 1



Foto 2



Foto 3



Foto 4



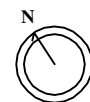
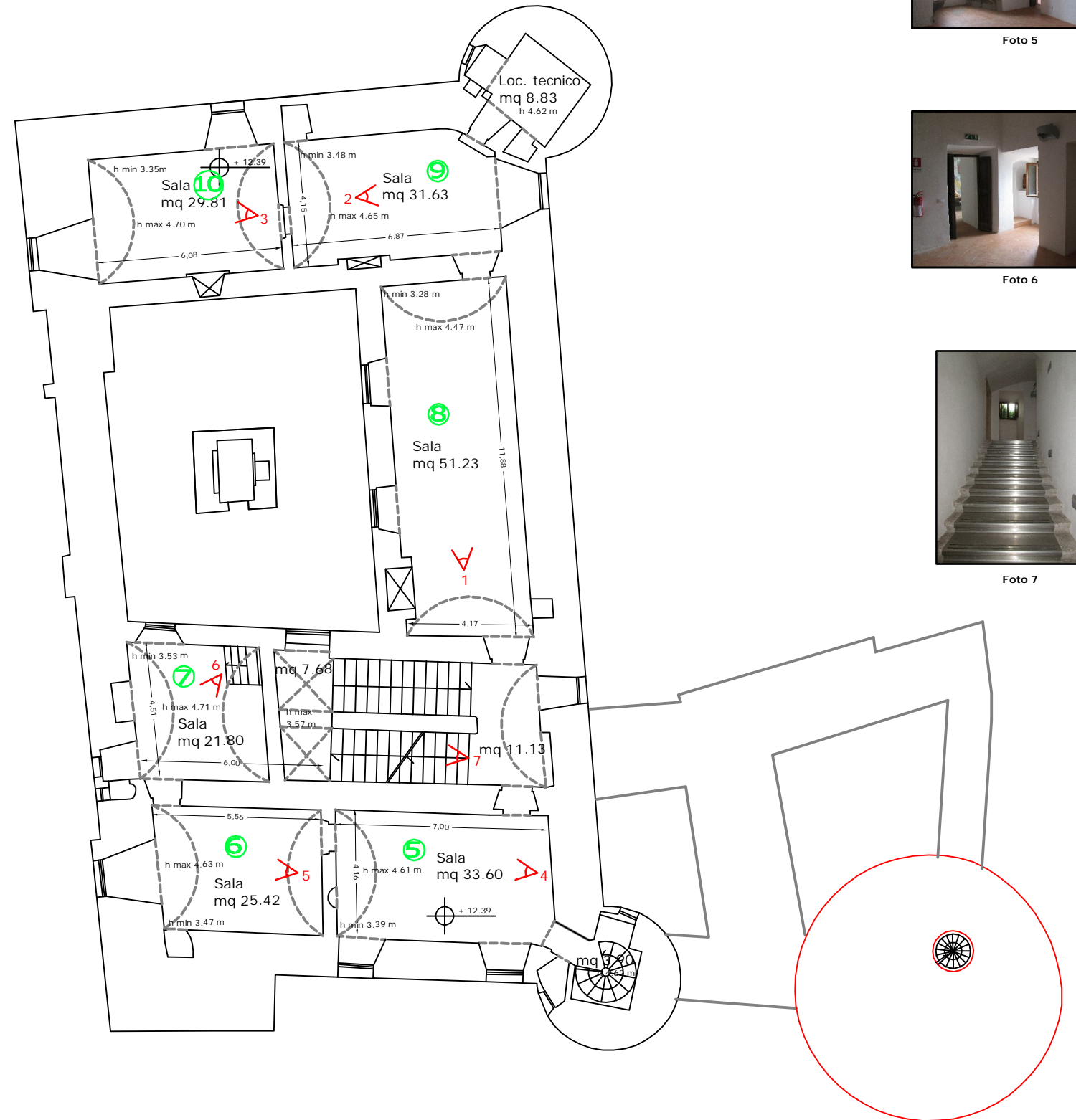
Foto 5



Foto 6



Foto 7



**Comune di Santa Marinella
Castello di Santa Severa**

Descrizione della tavola:

AREA museale
"Castello e Torre Saracena"

Piano secondo

Scala:

Scala 1 : 100



Data:

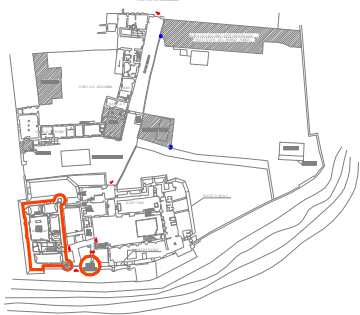
ottobre 2017

Tavola:

4

Legenda

-  + 0.00 quota pavimento
-  cono foto



RILIEVO PIANO SECONDO



Foto 1



Foto 2



Foto 3



Foto 4



Foto 5



Foto 6



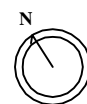
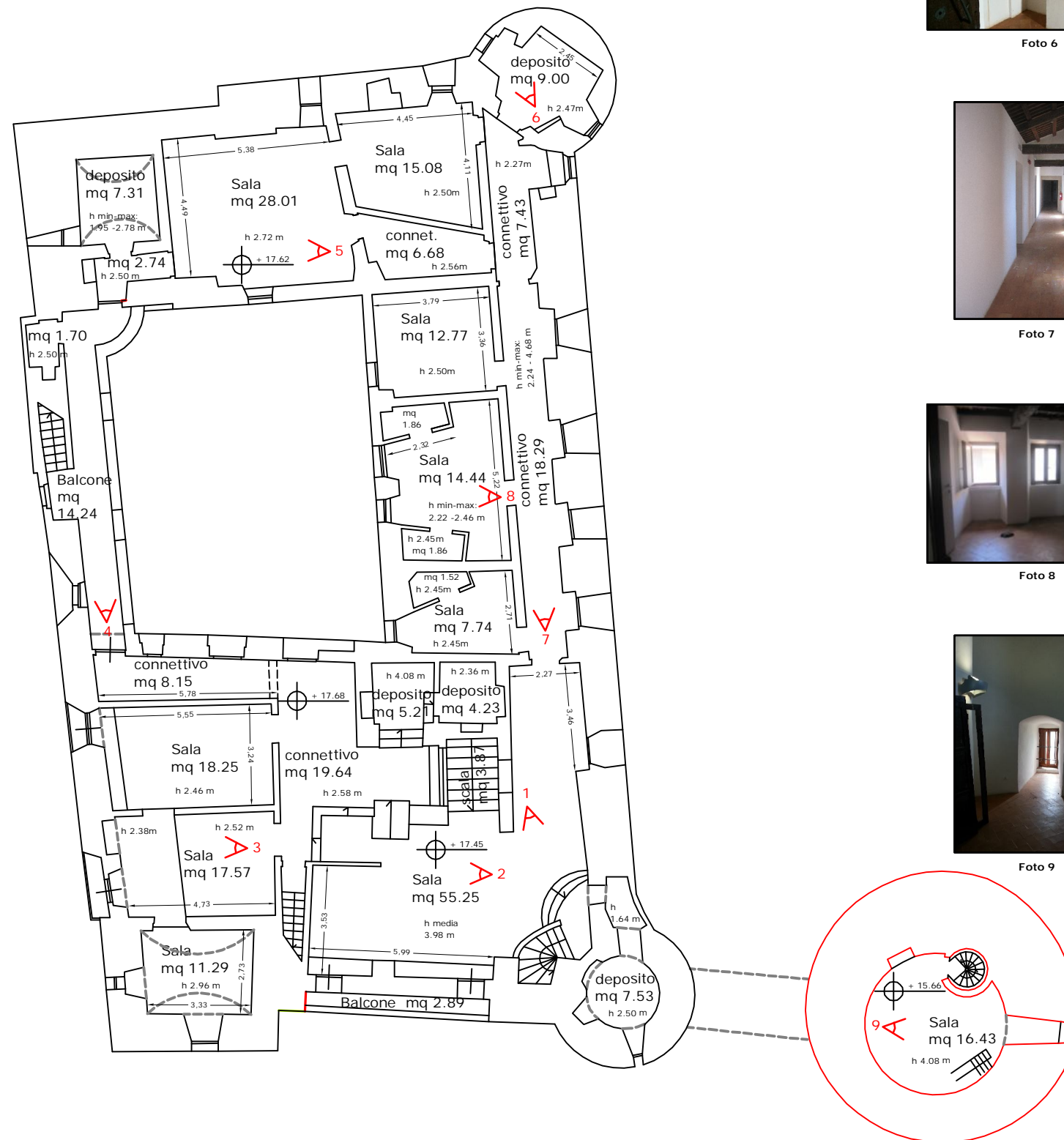
Foto 7



Foto 8



Foto 9



**Comune di Santa Marinella
Castello di Santa Severa**

Descrizione della tavola:

AREA museale
"Castello e Torre Saracena"

Piano terzo

Scala:

Scala 1 : 100


Data:


ottobre 2017

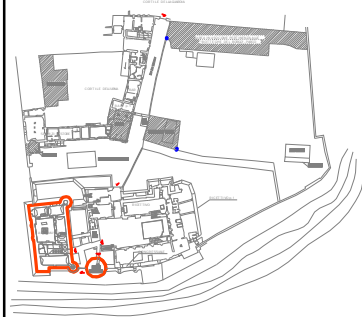
Tavola:

5

Legenda

 + 0.00 quota pavimento

 cono foto



RILIEVO PIANO TERZO



Foto 1



Foto 2

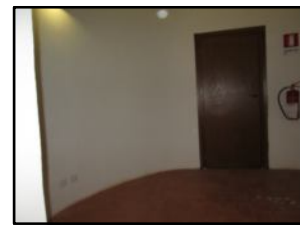


Foto 3



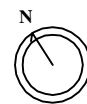
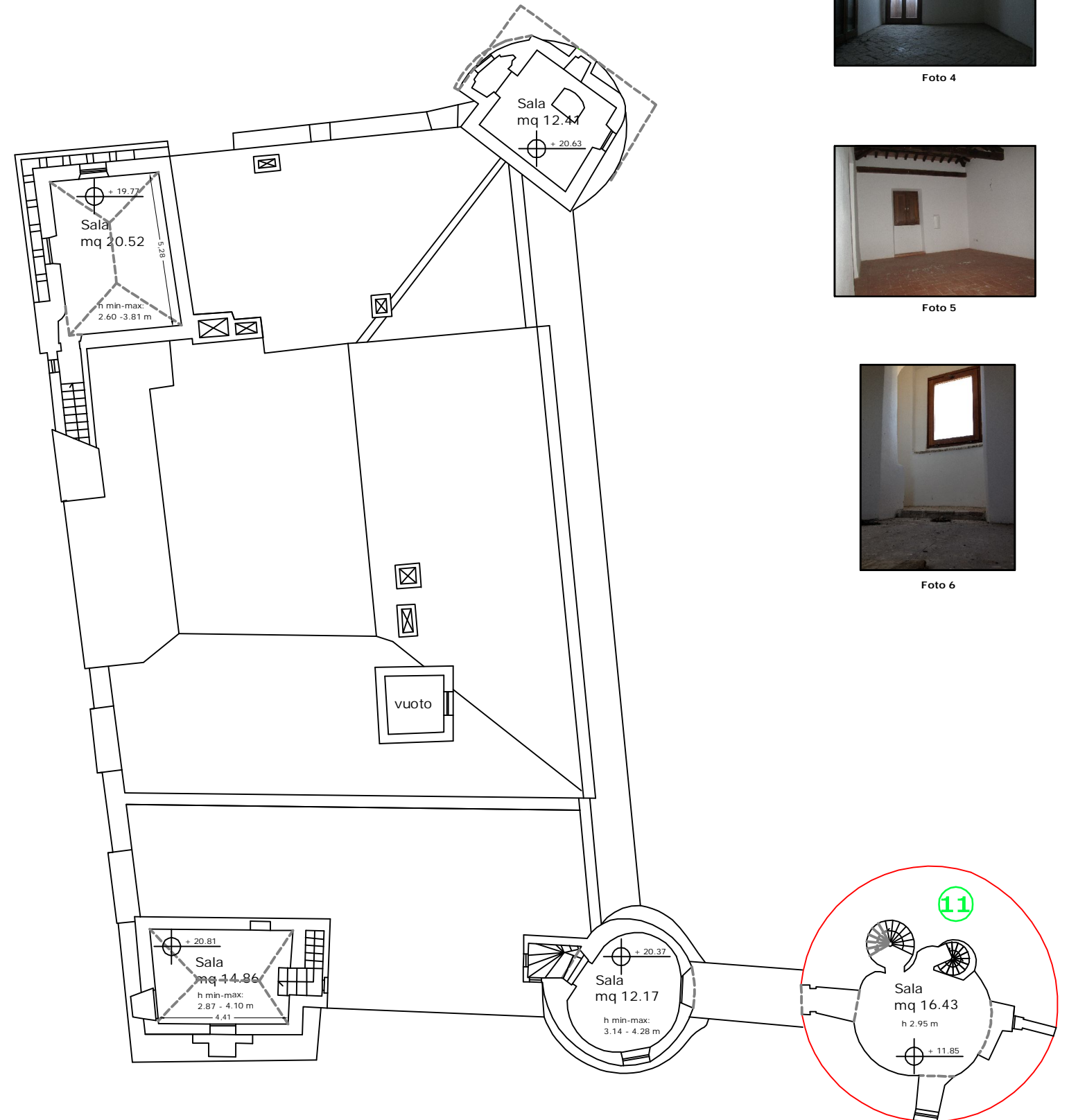
Foto 4



Foto 5



Foto 6



**Comune di Santa Marinella
Castello di Santa Severa**

Descrizione della tavola:

AREA museale
"Castello e Torre Saracena"

Piano quarto copertura

Scala:

Scala 1 : 100


Data:


ottobre 2017

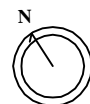
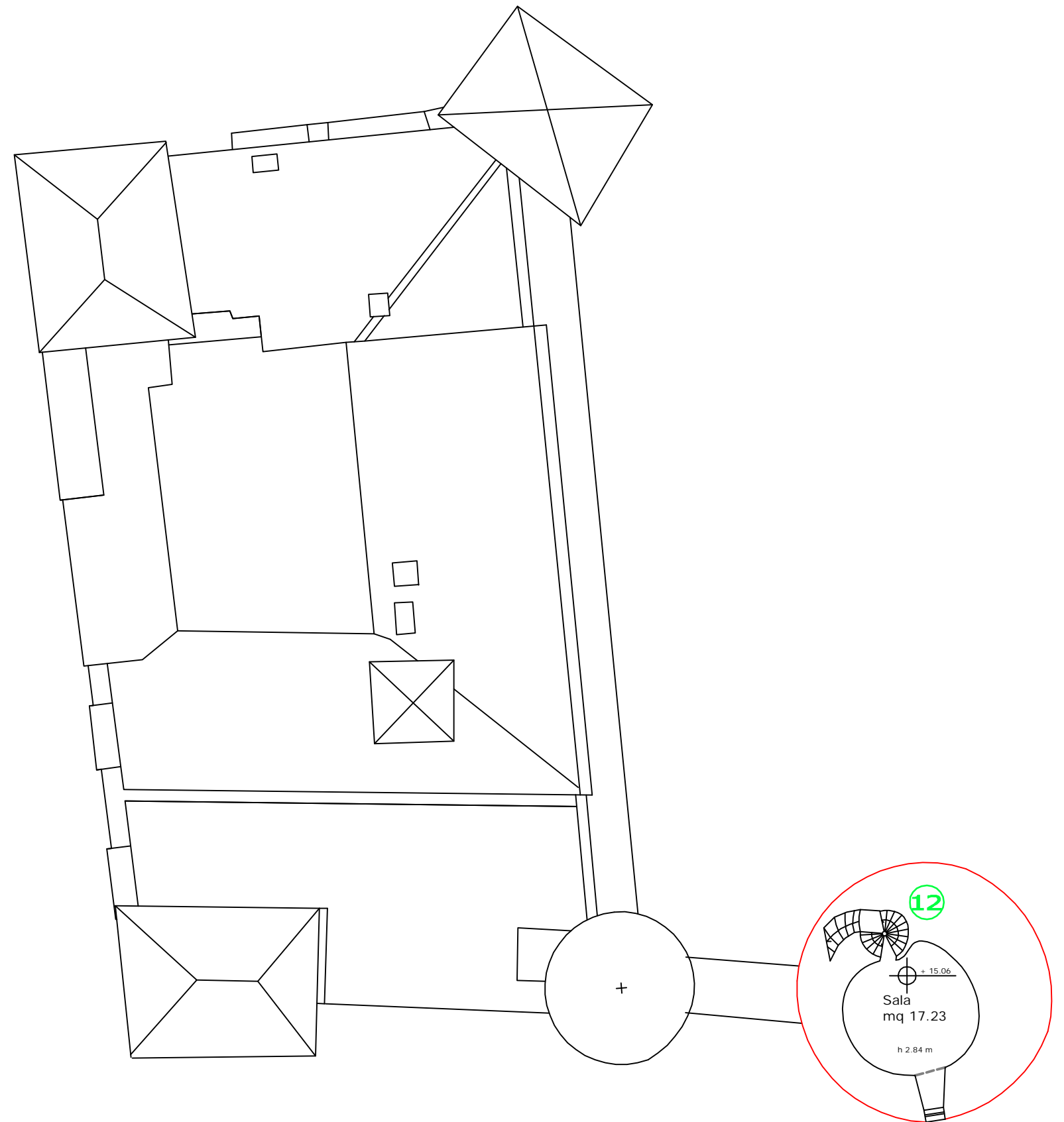
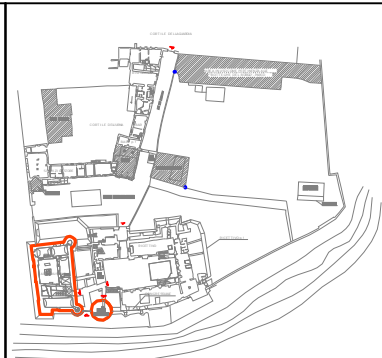
Tavola:

6

Legenda

 - 0.00 quota pavimento

 cono foto





Comune di Santa Marinella
Castello di Santa Severa

Descrizione della tavola:
AREA MUSEALE
"Sala Nostromo"

Scala:	Data:	Tavola:
Scala 1 : 100	Ottobre 2017	7

Legenda
⊕ quota
▬ pavimento
↖ cono foto



RILIEVO PIANO TERRA QUOTA + 7.12

AREA CONGRESSUALE "La Casa del Monaco - La Casa del Conte"

